

Engineer the sole

Shoemaster^{QS} SoleDesign

Equipment:

- 3D optical digitisers
- 3D contact digitisers
- 3D manual digitisers
- Rapid prototyping machines
- CNC milling machines
- Colour printers and drawing plotters

Other related products:

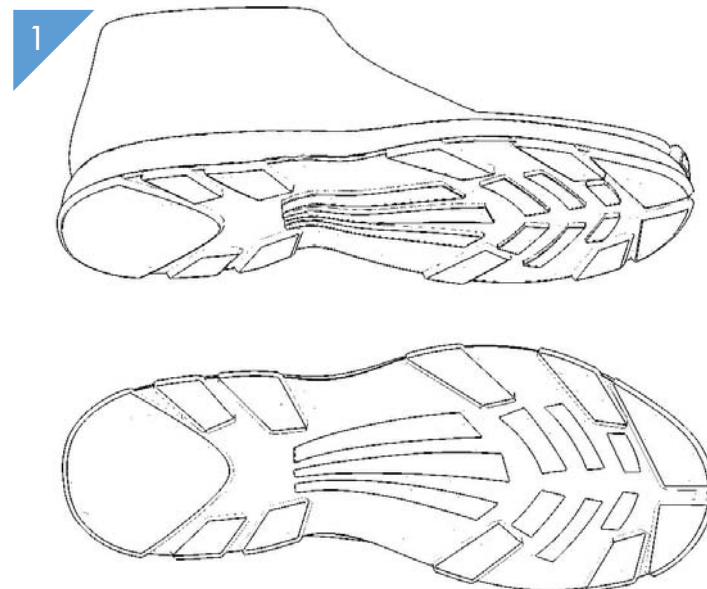
- Shoemaster^{QS} Creative
- Shoemaster^{QS} Power
- Shoemaster^{QS} ThinkHeels
- Sourcing
- e-Last

Product benefits:

- Dramatic time reduction in the design and engineering process for soles and moulds.
- Improves the communication between designers and mould makers.
- Makes available the easy 3D modelling of complex soles to shoe designers.
- Increases productivity of CAM and CNC milling machines.
- Enables the quick evaluation of new design concepts.
- Fast reaction to market requests.
- Import and modification of existing 3D sole designs from other CAD systems.

Product overview

SoleDesign is specialist 3D software for the design and engineering of complex soles and related moulds. Based on the ThinkID mathematical engine, it uses parametric and associative technology and combines the power of advanced 3D CAD with the ease of use and speed of an application 'tuned' specifically for the shoe industry. Global Shape Modification functionality enables any number of design iterations to be made to the finished sole quickly and simply.



Product features:

- 1 2D sketches provide a fast start to 3D models.
- 2 Global shape modeling – adjust existing soles to any last.
- 3 Smart object library for tread shapes.
- 4 Automatic generation of 2D engineering drawings from 3D models.

Results:

- 2D technical drawings.
- Coloured rapid prototyping maquettes.
- 3D data for CNC mould making.
- Rotating 3D virtual sole – including textures.
- 3D sole for virtual shoe visualisation.
- Photographic quality images of the virtual sole.

