

# Footscanning and size estimation

## INFOOT<sup>®</sup> 3D footscanner

### Equipment:

- Windows compatible printers

### Other related products:

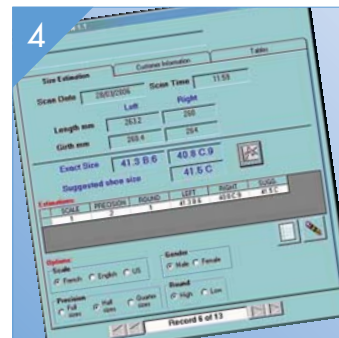
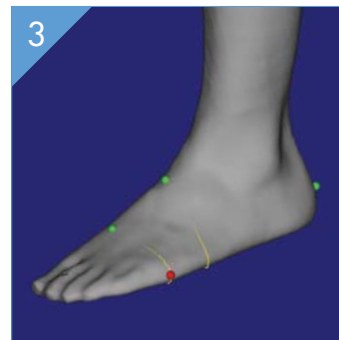
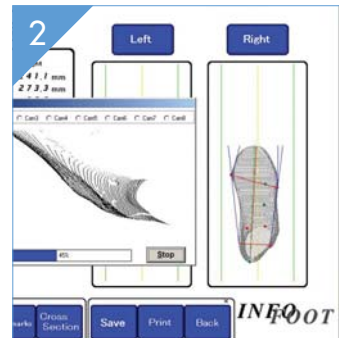
- Shoemaster<sup>QS</sup> FotoFit
- Shoemaster<sup>QS</sup> Orthopedie

### Product benefits:

- Fast capture of the complete foot in a single pass.
- High level of accuracy +/- 1mm.
- Reliable, consistent scanning operation.
- Portable, easy to move between locations.
- Easy to install and dismantle.
- Easy to use, simple user interface.
- Dedicated size estimation system, with report function (MS Access).
- Customisable customer information database (e.g. name, address etc).

### Product overview

Using state of the art laser and camera technology, the INFOOT<sup>®</sup> 3D footscanner allows you to capture accurate 3D foot shape data in a matter of seconds. The scanner can be used as a stand alone unit for foot measurement analysis and size estimation or alternatively used in conjunction with the Shoemaster<sup>QS</sup> Fotofit or Shoemaster<sup>QS</sup> Orthopedie systems for Custom or Orthopaedic footwear applications.



### Results:

- 3D foot shape data for use in measurement analysis.
- 3D foot shape data can be exported in STL, VRML, DXF and ASCII formats for use in CAD applications.
- Size estimation for both left and right feet with suggested shoe size.
- Customer information database.

### Product features:

- 1 Available in two models USB 'Standard' and USB 'High'.
- 2 Real-time scanning.
- 3 Allows capture of the complete foot up to 150mm high (USB Standard) and 250mm high (USB High).
- 4 Size estimation software.



# INFOOT® 3D footscanner

## Technical Specification

### Scanning Dimensions

USB Standard: Length 400mm  
Width 200mm  
Height 150mm  
USB High: Length 400mm  
Width 200mm  
Height 250mm

### Accuracy

1mm Step: Y(W) – Z(H) = 1mm X(L) = 2mm  
0.5mm Step: Y(W) – Z(H) = 1mm X(L) = 1mm

### Physical Dimensions

USB Standard: Length 685mm  
Width 340mm  
Height 310mm  
USB High: Length 685mm  
Width 340mm  
Height 425mm

### Scanner Weight

USB Standard: 24 kg  
USB High: 32 kg

### Scanning Time

30mm per second  
(Average = approximately 8 seconds per foot)

### Data Processing

Approx ten seconds per foot

### Weight Limit

200 kg

### Export Formats

VRML, DXF, STL, ASCII Sections

### Recommended Computer Specification

Intel Pentium 4 or equivalent 2.6 GHZ or above Hyper  
Threading recommended  
Windows XP Professional Operating System  
512 MB RAM  
40GB Hard Drive  
1 spare USB 2.0 port

### Scanner to Computer Connection

USB 2.0 Cable

### Power Supply

100v~240v  $\pm 10\%$  50/60 Hz

### Software

Measure – Scanning, Measurement, View and Printing  
Tester – Hardware and Scanning Configuration  
File Converter – File Format Conversion

### Optional Accessories

Foot Cover, Foot stage, Landmark markers  
Stainless steel handrail  
Calibration kit  
Carry case



CSM3D International Limited  
12 Leigh Road, Street, Somerset, BA16 0HA, England

Tel: +44 (0)1458 841234 Fax: +44 (0)1458 840646  
E-mail: info@shoemaster.cix.co.uk  
Web: www.shoemaster.co.uk



Torielli  
C.so Torino 127  
27029 Vigevano (Italy)

Tel: +39 0381 329 777 Fax: +39 0381 329 656  
E-mail: sales@torielli.com Web: www.torielli.com